

# T-315 Crane

Sierra International offers one of the safest method of handling material loading while improving plant operations. The Sierra T-315 crane allows the operator to raise and lower the height of the cab to provide maximum visibility of the work area. A six blade orange peel grapple with rotator can load your conveyor faster and more evenly. Burden depths are more even, assisting the sorting task. The grapple can quickly and easily remove contaminants and set them aside.

The wide steel push blade and four-wheel drive two-speed transmission moves material around the plant with ease. Front axle steering, puncture proof solid rubber tires and telescoping cab assist making daily operations easier and more efficient. Transfer stations and recycling plants are discovering the benefits that have been used extensively in Europe.



## Features

- o Two Piece Boom - 27ft Reach
- o Six Blade Orange Peel Crapple With Rotator
- o Front Heavy Duty Blade
- o Two Rear Stabilizers
- o Total Weight - 38,200 lb

## Engine Specifications

- o Cummins 4 Cylinder Diesel with 75
- o Horsepower at 2200 RPM
- o Water Cooled
- o 45 Gallon Fuel Tank
- o Electrical System 12 Volt

## Hydraulic System

- o Rexroth Double Variable Displacement Piston Pumps
- o Maximum Working Pressure - 3600 PSI
- o Hydraulic Oil Cooler
- o Complete In-Tank Oil Filtering
- o 71 Gallon Oil Tank

## Cab Specifications

- o Hydraulic Oil Cooler
- o Soundproof Cab with heater and hydraulic lift
- o Cab rotation with Axial Piston Motor and Planetary Reduction Gear (Maximum rotation speed 10 rpm)
- o Driver's seat with adjustable suspension, integrated joysticks, lights and gauges.

## Transmission

- o Two Speed Transmission with Axial Piston Motor
- o Travel Speed: 1st Gear - 2 MPH, 2nd Gear - 6 MPH
- o Rear Wheel Drive

## Steering

- o Power Steering Unit with Single Gear Pump
- o Front Axle Steering

## Options

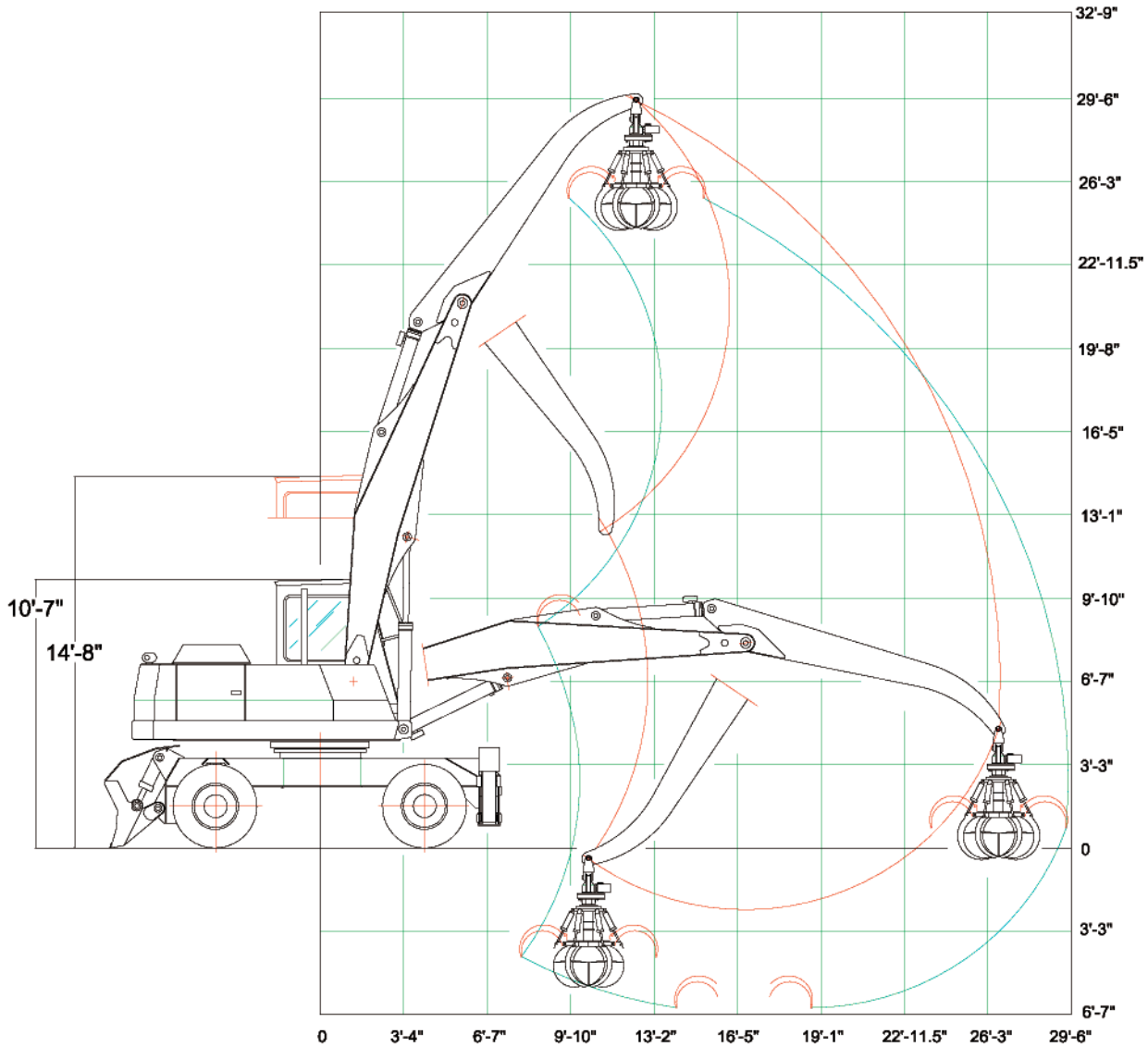
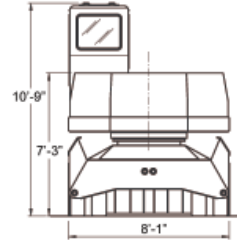
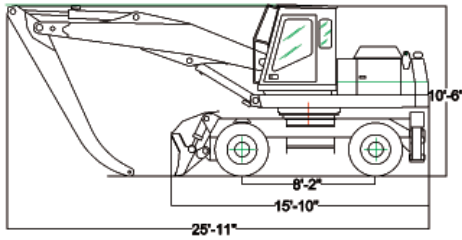
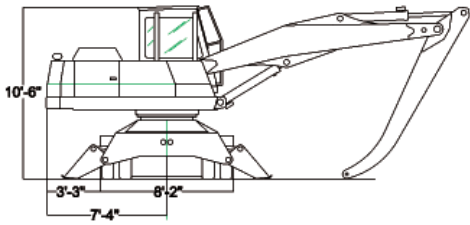
- o Four Wheel Drive, Air Conditioned Cab, Electromagnet Kit



**SIERRA INTERNATIONAL MACHINERY, LLC**  
HIGHER PERFORMANCE. LOWER COST

200 Rufe Snow | Suite 124 | Keller, TX 76248 | 817-337-7111 | [sierraintl.net](http://sierraintl.net) | Email: [info@sierraintl.net](mailto:info@sierraintl.net)

# T-315 Crane



**SIERRA INTERNATIONAL MACHINERY, LLC**  
HIGHER PERFORMANCE. LOWER COST

200 Rufe Snow | Suite 124 | Keller, TX 76248 | 817-337-7111 | [sierraintl.net](http://sierraintl.net) | Email: [info@sierraintl.net](mailto:info@sierraintl.net)