



# REB-2

## 250 HP

## Recycle Everything Baler

The Sierra REB-2-Twin 125HP (250HP total) two ram, wide box, high density, fully automated baler handles all your Non Ferrous material including: Aluminum, Extrusions, Cans, Stainless Steel, Copper, Radiators and Wire with ease. In addition, it will bale PET, OCC and all grades of paper.

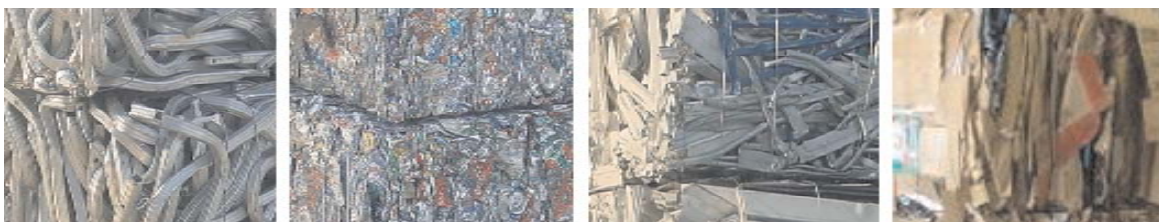
### STANDARD FEATURES:

- Twin 125 HP Main Motors (250 HP), 460 volt, 3 phase, 60 hertz
- 4500 PSI (310 bar) hydraulic system operating pressure
- Wye Delta main motor starting
- Filtration: Online 5 micron/Offline 3 micron filter
- Oil Cooler
- Oil Heater
- Adjustable Ram guides "patent pending"
- Separation Door with Bale relief
- Tongue and Groove floor liner plates
- Hardox 450 Replaceable liners
- Allen Bradley PLC
- Panelview HMI provides for material selection and diagnostics
- Modem for on site diagnostics
- Automatic Operations on Most Materials
- Conveyor controls up to 10 HP
- Main Ram penetration 60% of bale chamber
- Heavy Duty Frame and Ram construction
- Automatic Wire Tier supplied at Customer's Request
- Operator's platform
- Bale Table

### GENERAL SPECIFICATIONS:

- Overall dimensions: 39'-6"L x 19' 2"W x 8'-3"H
- Hopper opening: 78" W x 101" L
- Charge box opening: 57-1/2"W x 96"L
- Bale size expanded: 45" W x 31"H x 62-64"L
- Volume: 100 Cu Ft/Charge
- Dry cycle time: 8 SECONDS
- System pressure: 4500 PSI
- Shear / Baling force: 254 Tons
- Ramface pressure: 304 PSI
- Main pump flow: 542 GPM Total System (Regaen System)
- Main motors: Twin 125 HP - 460V - 3 PH - 60 HZ - TEFC
- Shipping weight: 50 Tons

*Manufactured by*  
Sierra  
International  
Machinery LLC.  
200 Rufe Snow, Ste 124  
Keller, TX 76248  
817-337-7111  
[www.sierraintl.net](http://www.sierraintl.net)

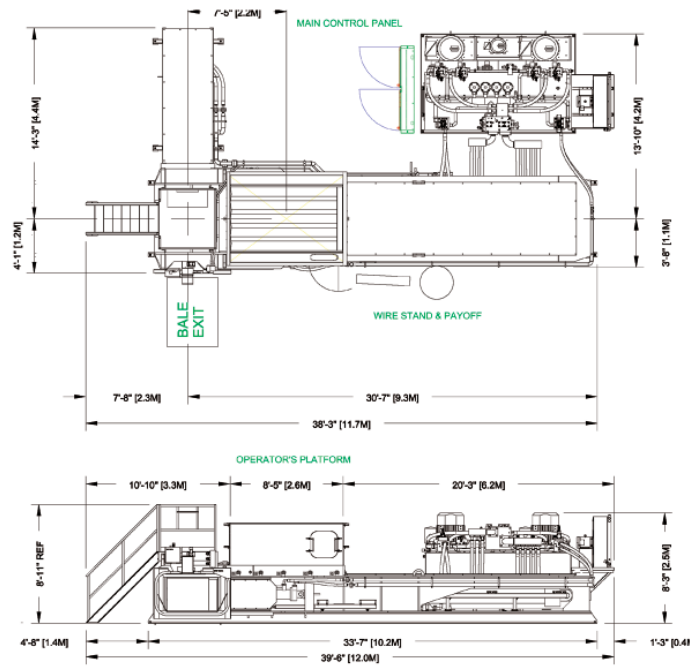




# REB-2

## 250 HP Baler

### PERFORMANCE:



**Bale Size:**  
45" Wide x 31" High x 62-64"  
Length

**Bale Volume:**  
50 Cubic Feet Expanded  
(Approximately)

**Cycle Time:**  
8 Seconds  
(no Load – Main Cylinder Only)

**Non Ferrous Material**

- Aluminum Cans up to 1200 lb
- Automobile Radiators up to 2500 lb
- Copper up to 2500 lb

| Material     | Material PCF Infeed Density | Bale Weight LB | Density PCF Baled | Output Tons per Hr |
|--------------|-----------------------------|----------------|-------------------|--------------------|
| *OCC         | 2.5-4                       | up to 1500     | up to 30          | 20-25              |
| *News        | 6-8                         | up to 1700     | up to 34          | 35-40              |
| *PET         | .75-4                       | up to 1250     | up to 25          | 8-10               |
| *UBC         | 1.5-4                       | up to 1200     | up to 24          | 16-18              |
| *Solid Waste | 8-12                        | up to 2400     | up to 48          | 30-45              |

\*Note: Performance rates, bale weights and bale densities are subject to moisture content, material pre-bale densities, feed rates and other variables in baling.

### HYDRAULIC:

Main Pumps: 542 GPM Total System (Regen System)  
 System Pressure: 4500 PSI  
 Main Cylinder: 12" Bore, 254 Tons  
 Ejector Cylinder: 8" Bore, 113 Tons  
 Bale Door Cylinder: 7" Bore, 87 Tons  
 Total Force: 508,000 lb—254 Tons  
 Ram Face Pressure: 304 PSI  
 Oil Reservoir: 1400 Gallons  
 Filtration: Online 5 micron/Offline 3 micron filter  
 Strapper: Accent or L&P U.O.S. by Customer

### ELECTRICAL:

Main Motors: TWIN 125 HP, 1750 RPM, 460 Volt, 60 Hz, 3 Phase  
 Cooler Fan Motor: 7-1/2 HP, 460 Volt, 60 Hz, 3 Phase  
 Strapper/Cooler Pump Motor: 25 HP, 460 Volt, 60 Hz, 3 Phase  
 Main Enclosure: NEMA 12 Rated  
 Operator's Console: Manual, Semi-Automatic or Automatic Operation  
 Control Switches: Proximity Type Limit Switches  
 Hopper Sensor: Infrared Type, Through-Beam Sensor with variable time

### STRUCTURAL:

Length Overall: 34'-10" (39' 6" including platform)  
 Width Overall: 19' 2"  
 Charging Hopper Height: 7' 6"  
 Hopper Opening: 101" Long x 78" Wide  
 Charge Box Opening: 96" Long x 57 1/2" Wide  
 Shear Blade: Knife Steel, Flip x 3  
 Shipping Weight: 50 Tons Approximately