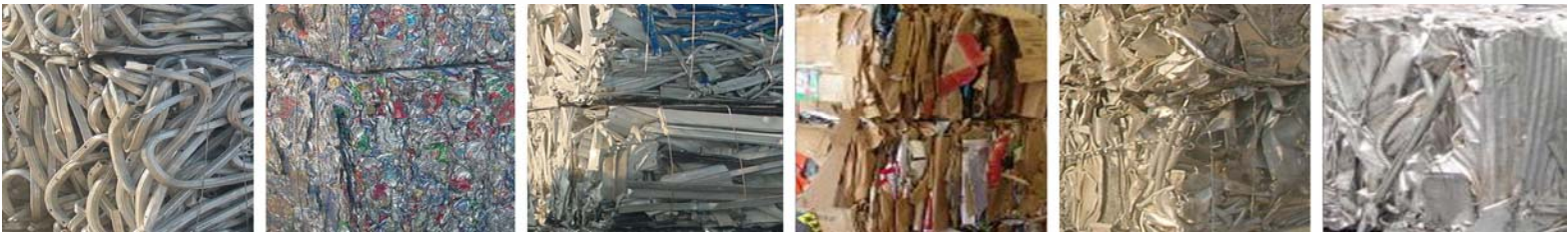


REB-1



RECYCLE EVERYTHING BALER



The Sierra REB-1 handles all your Non Ferrous material including: Aluminum, Extrusions, Cans, Stainless Steel, Copper, Radiators and Wire with ease. In addition, it will bale PET, OCC and all grades of paper.

STANDARD FEATURES:

- 75 HP (56kw), 480 volt, 3 phase, 60 hertz
- 4500 PSI (306 bar) hydraulic system operating pressure
- Wye Delta main motor starting
- Filtration: 5 micron return-line, 3 micron kidney loop
- Flooded suction power unit
- Oil Cooler
- Oil Heater
- Adjustable Ram guides "patent pending"
- Separation Door with Bale relief
- Tongue and Groove floor liner plates
- Hardox 450 Replaceable liners
- Allen Bradley PLC
- Panelview HMI provides for material selection and diagnostics
- Modem for on site diagnostics
- Automatic Operations on Most Materials
- Conveyor controls
- Main Ram penetration 60% of bale chamber
- Heavy Duty Frame and Ram construction
- Automatic Wire Tier supplied at Customer's Request
- Operator's platform
- Bale Table

GENERAL SPECIFICATIONS:

- Overall dimensions: 360"L x 175"W x 84"h
- Hopper opening: 60"W x 77"L
- Charge box opening: 41"W x 72"L
- Bale size expanded: 46"W x 31"H x 62"L
- Dry cycle capacity: 12,000 CU.FT/HR
- Dry cycle time: 15 SECONDS
- System pressure: 4500 PSI
- Shear / Baling force: 143 TONS
- Ramface pressure: 241 PSI
- Main pump flow: 153 GPM
- Main motor: 75HP - 460V - 3 PH - 60 HZ - TEFC
- Shipping weight: 55,000 lbs.

Manufactured By



**SIERRA INTERNATIONAL
MACHINERY, LLC**

www.sierraintl.net

REB-1

RECYCLE EVERYTHING BALER

PERFORMANCE:

Bale Size: 45 In Wide x 31 In High x 62-64 In Length
 Bale Volume: 50 Cubic Feet Expanded (Approximate)
 Cycle Time: 14 Seconds (no Load – Main Cylinder Only)

Non Ferrous Material	Bale Weights	Material	Material PCF Infeed Density	Bale Weight LB	Density PCF Baled	Output Tons per Hr
Aluminum Cans	900-1000 lbs	*OCC	2.5 - 4	up to 1450	up to 28	6-10
Automobile Radiators	2500-2800 lbs	*News	6 - 8	up to 1600	up to 32	12-18
Aluminum Clips	1200-1400 lbs	*PET	.75 - 4	up to 1200	up to 24	2-4
Copper	3300-3500 lbs	*UBC	1.5 - 4	up to 1000	up to 20	5-8
		*Solid Waste	8 - 12	up to 2400	up to 48	18-22

*Note: Performance rates, bale weights and bale densities are subject to moisture content, material pre-bale densities, feed rates and other variables in baling.



The operator's console and main control panel feature Allen Bradley Programmable Logic Controllers, Panelview HMI and Industrial Controls for easy to use including material selection.



The main motor and pump combination is a 75HP electric motor supplying the same punch as our competitor's 100HP systems.



Stationary shear knives feature segmented, serrated edges that have four useable sides. Each individual knife is bolted in place and can be shimmed as needed. Replacement can be done individually or as a group as needed.



Hydraulic oil can be cleaned and cooled using a 3 micron filter system when the baler is offline.



All hydraulic controls are grouped in one easy to access location. Flexible hydraulic hoses connect the power unit to the baler.

